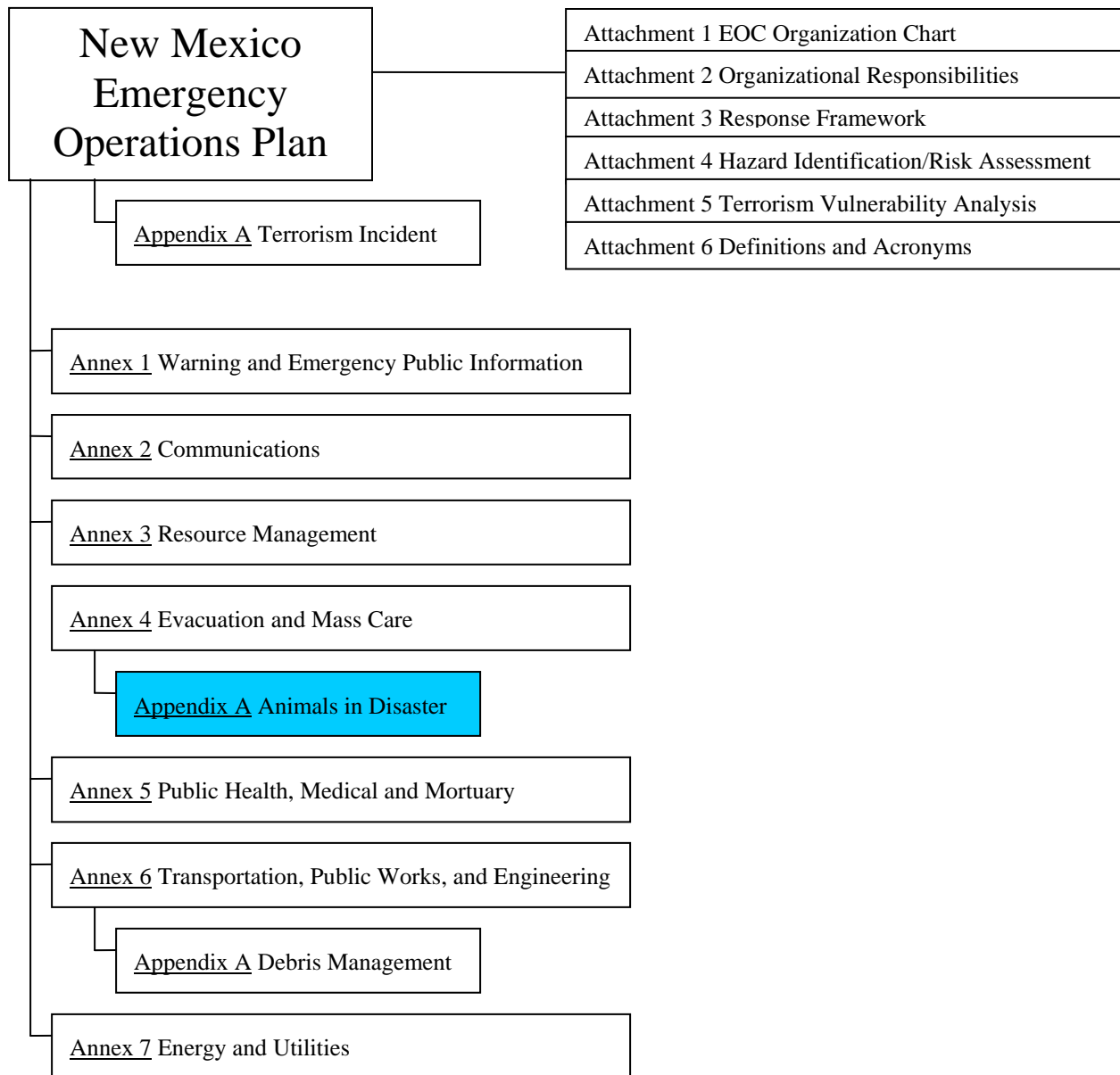


ANIMALS IN DISASTER

APPENDIX A TO ANNEX 4



ANIMALS IN DISASTER

TABLE OF CONTENTS

PURPOSE.....	3
SITUATION AND ASSUMPTIONS.....	3
CONCEPT OF OPERATIONS	3
ORGANIZATION AND RESPONSIBILITY	4
Primary.....	4
Support.....	4

I. PURPOSE

The purpose of this document is to provide coordination and guidance for state agencies and volunteers in efforts to assist local jurisdictions in response to the needs of animals during emergency situations. This document establishes the Animal Response Branch in the State EOC and addresses Public Information; Rescue, Retrieval and Recovery; Emergency Veterinary Triage; Evacuation, Sheltering and Disposition; Disposal; and Public Health and Safety.

II. SITUATION AND ASSUMPTIONS

Animals become dependent upon humans for care during disasters. Some animals will be injured, displaced or killed. When faced with an emergency/disaster, most animal owners will care for their animals when possible but may need assistance. Some animal owners will not care for their animals.

Many agencies and resources will be overwhelmed and will require assistance. Volunteers and donations will be necessary and will emerge. Public health and safety will take precedence over the needs of animals.

III. CONCEPT OF OPERATIONS

The needs of animals prior to, during, and following emergency and disaster situations are the primary responsibility of the owners and caretakers and of local government officials. When local resources are overwhelmed assistance is requested from the next level of government.

Appendix A to Annex 4 will be implemented only after a local jurisdiction declares an emergency or disaster, the State Emergency Operations Center (EOC) has been activated, and animal related issues have been determined to have overwhelmed local capabilities.

Office of Emergency Management (OEM) staff will request a representative of the New Mexico Livestock Board (NMLB) to report to the EOC to activate the state response plan for Animals in Disaster and to perform emergency functions related to large animals and livestock as outlined in this plan.

The NMLB representative to the EOC will request a representative of the New Mexico Animal Control Association (NMACA) or other appropriate organization to report to the EOC to perform emergency functions related to all other animals. These representatives will be integrated into the Operations Section as the Animal Response Branch under the direction of the NMLB representative. The Animal Response Branch will coordinate with state agencies, local authorities, and volunteer entities to address the needs of animals during the response phase of the emergency or disaster.

IV. ORGANIZATION AND RESPONSIBILITY

Primary

Office of Emergency Management (NM DPS OEM):

- Provides direction and assistance to the Animal Response Branch in the coordination of resources.
- Provides centralized coordination of animal specific public information release.

New Mexico Livestock Board (NMLB):

- When requested, dispatches a representative to the EOC to activate the state response plan for 'Animals in Disaster'.
- Coordinates with representatives of New Mexico Animal Control Association (NMACA), other organizations, and local officials for the comprehensive response to animal issues.
- Provides direction and control with regard to large animals and livestock including but not limited to the following issues:
 - Population estimation
 - Recovery, retrieval, rescue and evacuation
 - Decontamination, Euthanasia and Disposal
 - Disposition of stray and unclaimed animals
 - Public health and safety
- Coordinate requests for activation of National Animal Support Agencies.

Support

New Mexico Animal Control Association (NMACA):

- When requested by NMLB, dispatches a representative to the EOC to provide direction and control with regard to all other animal issues (i.e. companion animals, strays, wildlife).
- Coordinates with representatives of New Mexico Livestock Board (NMLB), other organizations, and local officials for the comprehensive response to animal issues.
- May call on local animal humane associations, national animal support agencies and voluntary organizations as resources.
- Provides direction and control with regard to companion animals, strays and wildlife including but not limited to the following issues:
 - Population estimation
 - Recovery, retrieval, rescue and evacuation
 - Public health, safety and security
 - Animal sheltering

New Mexico Veterinary Medical Association (NMVMA)

- Coordinates Emergency Veterinary Triage by volunteer veterinarians, technicians and assistants when requested by the Animal Response Branch.

Department of Health (NMDOH)

- In coordination with ED, Game and Fish, and NMLB, may provide for the emergency disposal of livestock and large quantities of carcasses.
- Coordinates the diagnosis, prevention and control of zoonotic diseases and other animal related conditions of public health significance.

Environment Department (NMED):

- In coordination with DOH, Game and Fish, and NMLB, may provide for the emergency disposal of livestock and large quantities of carcasses.

Game and Fish Department:

- May assist in the recovery, retrieval, rescue, and evacuation of wildlife and exotic animals.
- In coordination with NMDOH, NMED and NMLB, may provide for the emergency disposal of livestock and large quantities of carcasses.
- May assist NMACA and local authorities with public safety and security by providing law enforcement support.

THIS PAGE LEFT BLANK INTENTIONALLY